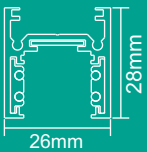
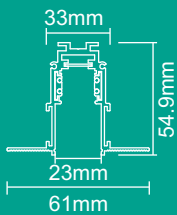


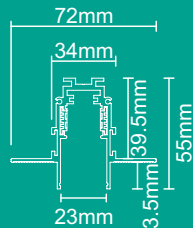
Track Connection



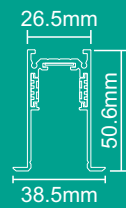
EMT20-SMT2000



**EMT20-RMT1000
EMT20-RMT3000**



**EMT20-RMT1000-UP
EMT20-RMT3000-UP**

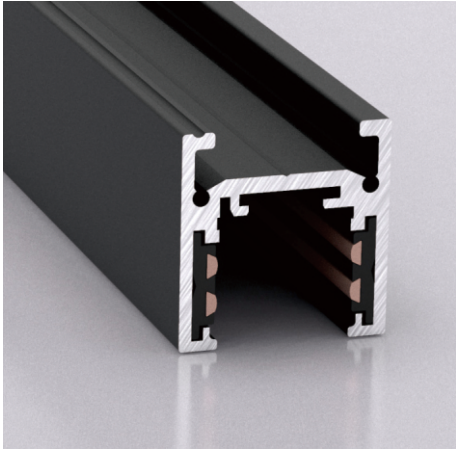


**EMT20-RMT1000-C
EMT20-RMT3000-C**

Track

SURFACE MOUNTED TRACK

EMT20-SMT2000(2M)

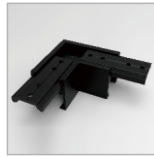


Product size

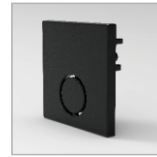
2000*26*28 mm

Voltage

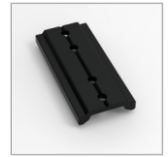
DC48V



EMT20-SMT-L Joint



EMT20-SMT-End cap



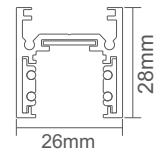
EMT20-SMT-connect plate



EMT20-SMT-Ceiling mounted kit



EMT20-SMT-Suspension kit



RECESSED MOUNTED TRACK

EMT20-RMT1000(1M)

Product size

1000*61*55 mm

Voltage

DC48V

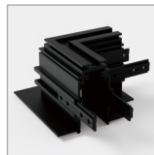
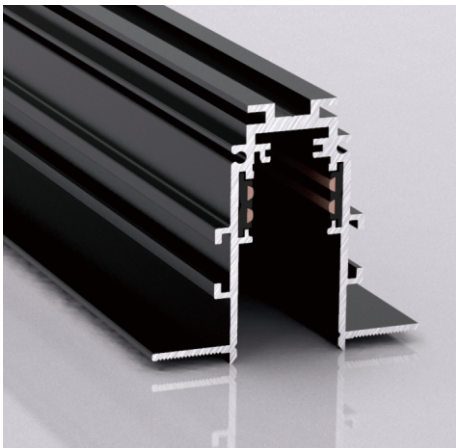
EMT20-RMT3000(3M)

Product size

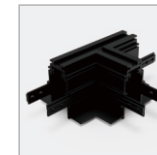
3000*61*55 mm

Voltage

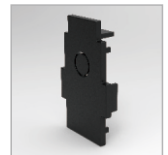
DC48V



EMT20-RMT-L Joint



EMT20-RMT-T Joint



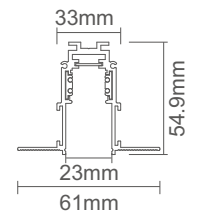
EMT20-RMT-End cap



EMT20-RMT-PC cover



EMT20-RMT-Alu Linear connector



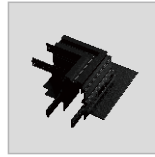
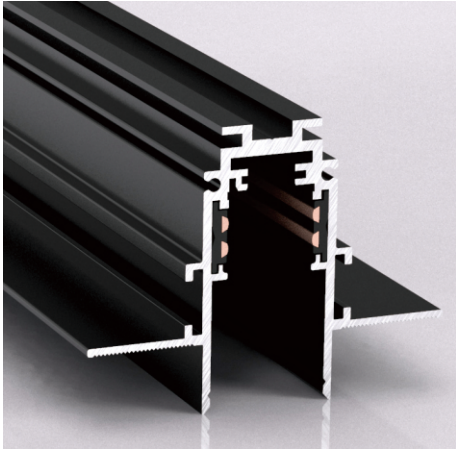
RECESSED MOUNTED TRACK

EMT20-RMT1000-UP (1M)

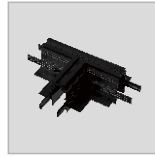
Product size	Voltage
1000*72*55 mm	DC48V

EMT20-RMT3000-UP (3M)

Product size	Voltage
3000*72*55 mm	DC48V



EMT20-RMT-UP-L joint



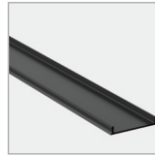
EMT20-RMT-UP-T Joint



EMT20-RMT-UP-X Joint



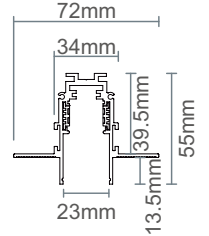
EMT20-RMT-End cap



EMT20-RMT-PC cover



EMT20-RMT-Alu Linear connector



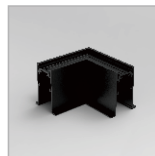
RECESSED MOUNTED TRACK

EMT20-RMT1000-C (1M)

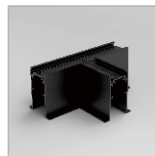
Product size	Voltage
1000*38.5*50.6 mm	DC48V

EMT20-RMT3000-C (3M)

Product size	Voltage
3000*38.5*50.6 mm	DC48V



EMT20-RMT-C-L joint



EMT20-RMT-C-T Joint



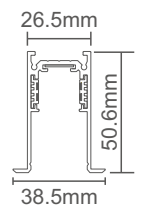
EMT20-RMT-Connect Plate



EMT20-RMT-C-Inner Joint

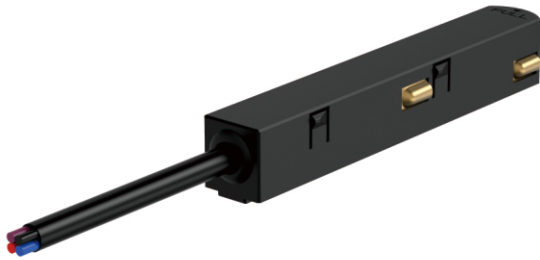


EMT20-RMT-C-End Cap





GENERAL ACCESSORIES



EMT20-Input conductor



EMT20-Straight connector



EMT20-Flexible connector



EMT20-T Flexible connector