

IP67 Free cut COB Strip

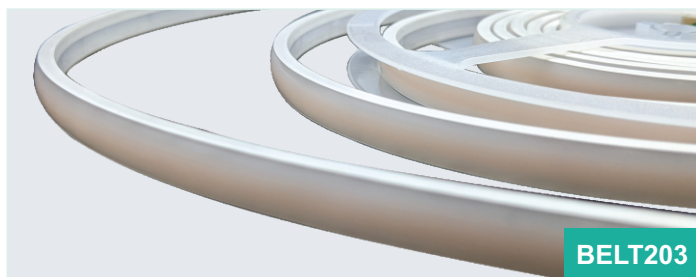
BELT202
BELT203

Free cut and dotless design provide convenient installation and better lighting distribution to exterior linear application, especially for marble stairs, patios and pergolas.





BELT202



BELT203



Free cut

Can be cut at any position.



Silicone

High-quality silicone material, high light transmittance, anti-UV & anti-corrosion.



EQUAL-WIDTH CAPS

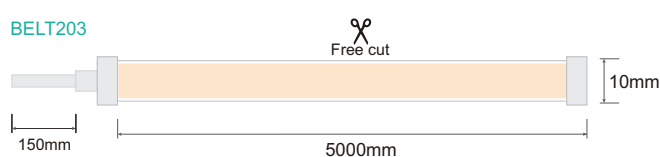
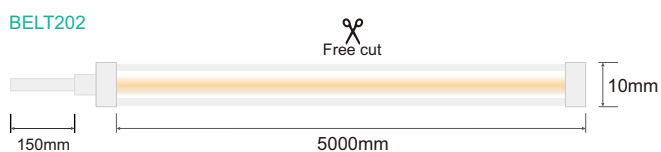
Integral injection molded input cap and end cap. Has good waterproof performance.



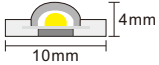
Dotless

Uniform light emission, no dark areas.

DIMENSIONS



PRODUCT PARAMETERS

Model	BELT202	BELT203
		
Input	DC24V	
LED/M	528pcs/M	
M/Reel	5M/Reel	
LED type	COB	
CRI	>90	
IP rating	IP67	
Power	10W/M	
Lumen/M	550 lm/M@3000K	500 lm/M@3000K
CCT	2700K 3000K 4000K 6500K	

COMPATIBILITY

ON/OFF Triac 0/1-10V

DALI PWM

ACCESSORIES

BELT202

I joint Adapter connector L connector

Wire End cap&Input cap Glue

BELT203

I joint Adapter connector Wire

End cap Input cap Glue